

# Nautilus Hyosung EMV Card Reader Hardware & Software Upgrade Instructions

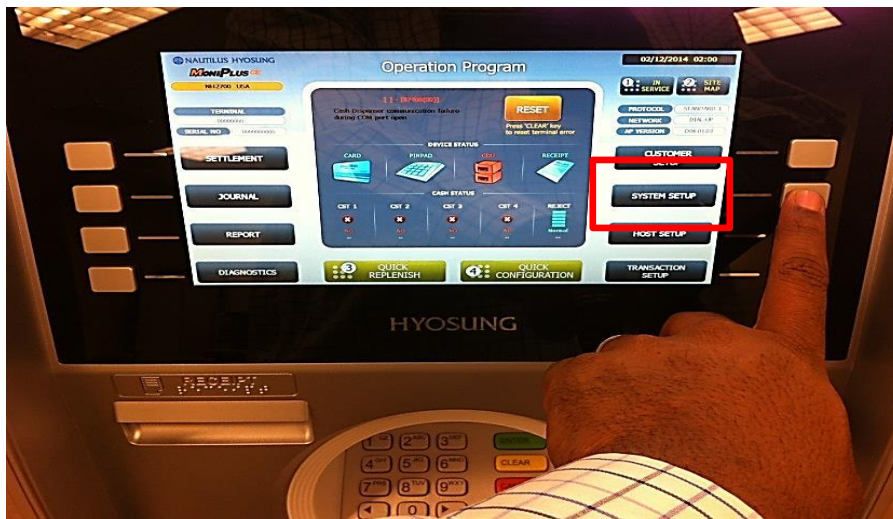
## Updating Software to New Release Supporting EMV

**Note:** Minimum software versions that support EMV Card Readers:

**WinCE 5.0** (APV01.04.14) 1800CE/5000CE/5300CE

**WinCE 6.0** (APV06.01.05) 1800SE/2700/2700T/4000W/5000SE/2600(HALO)

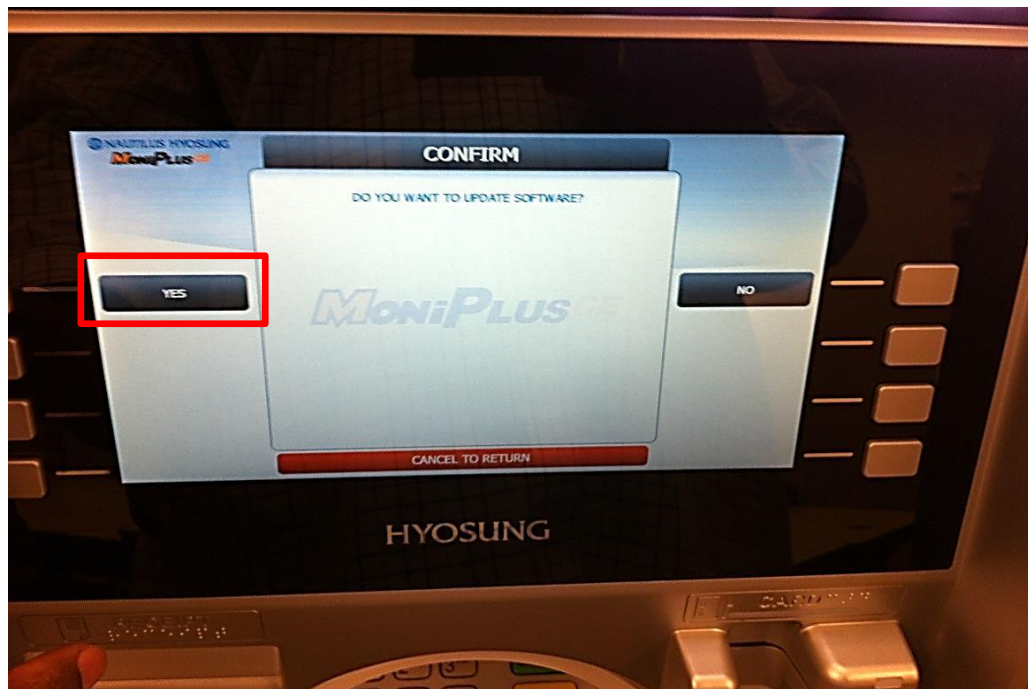
1. Insert USB device (with correct AP software) into the USB port (found on the mainboard for WinCE 5.0 and I/O board for WinCE 6.0 models), log into Operator Function Menu and select **System Setup**.



2. Select **System Control**.

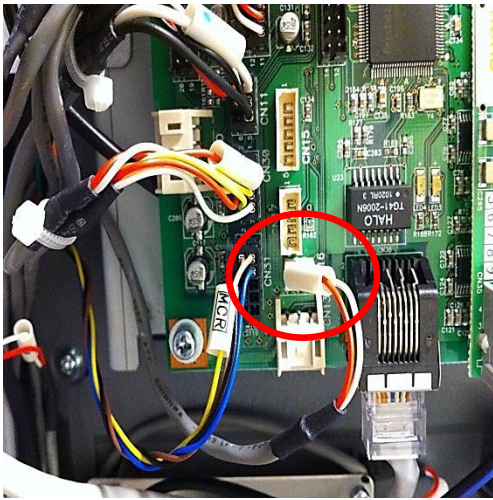


3. Select **Software Update** and confirm by selecting **Yes**.

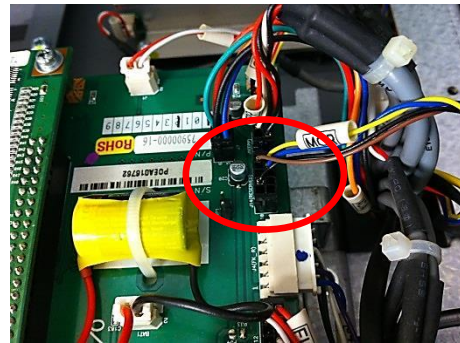


# EMV Card Reader Hardware Upgrade Kit Installation

1. Power down the ATM and locate the card reader cable on the I/O board and disconnect :  
CN31 on WinCE 6.0 / J14 on WinCE 5.0 (1800CE) / COM 1 on 5000CE/5300CE

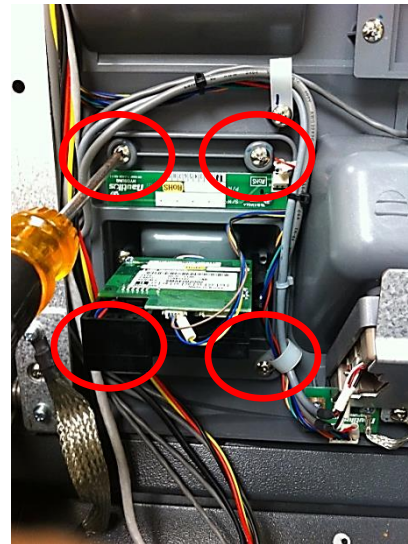


WinCE 6.0

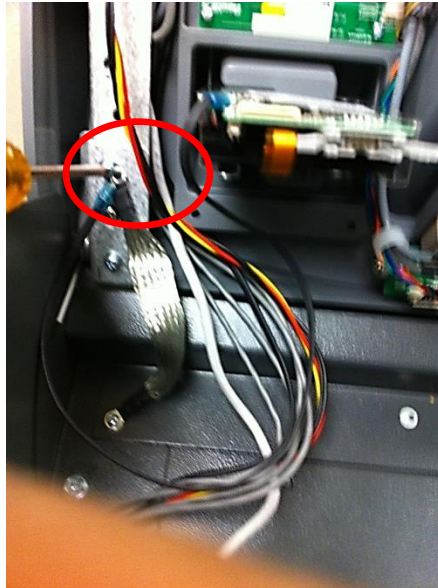


WinCE 5.0

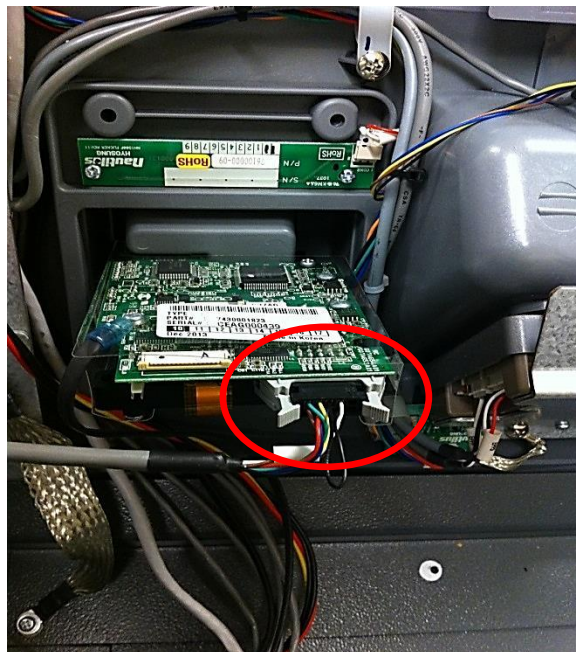
2. Remove the 2 screws that hold the card reader flicker board.
3. Remove the 4 screws that hold the card reader bezel and remove card reader with bezel.



4. Install new EMV card reader/bezel and replace the screws that hold the card reader and flicker board onto the bezel.
  - a. Screw ground wire from EMV card reader to a grounded point on the ATM body.



5. Connect Card reader cable to the I/O board ( see step1) and to the back of the card reader.  
CN31 on WinCE 6.0 / J14 on WinCE 5.0 (1800CE) / **COM4** on 5000CE/5300CE



# EMV Card Reader Software Enabling Instructions

To enable the EMV card reader  
(for either DIP or EMV transactions)

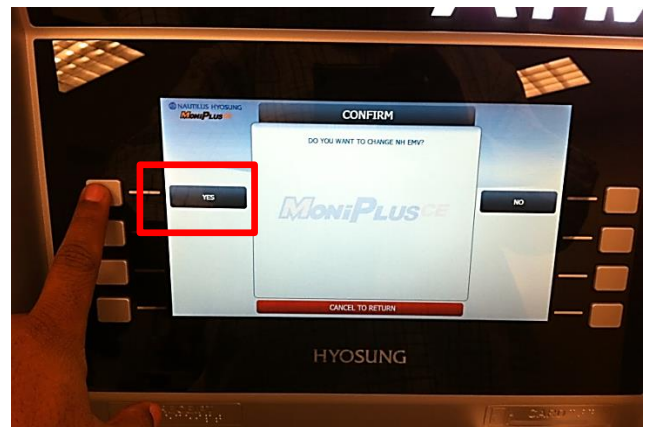
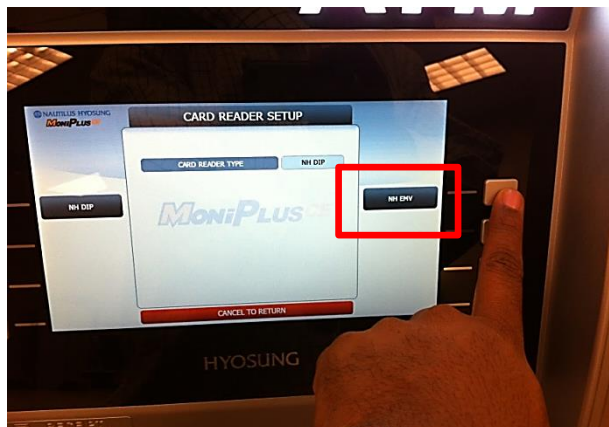
1. Log into Operator Function Menu and select **System Setup**.



2. Select **Device Setup**.

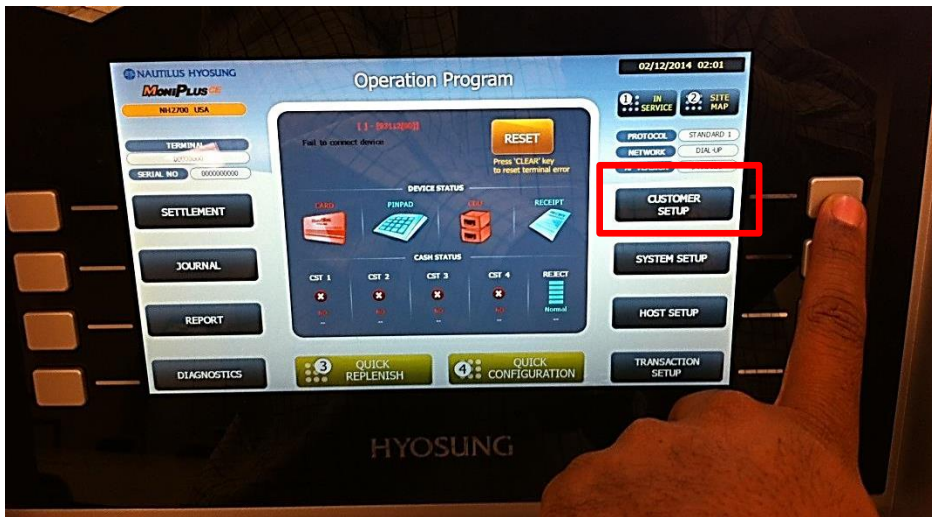


3. Select **NH EMV** and confirm by selecting **Yes**.

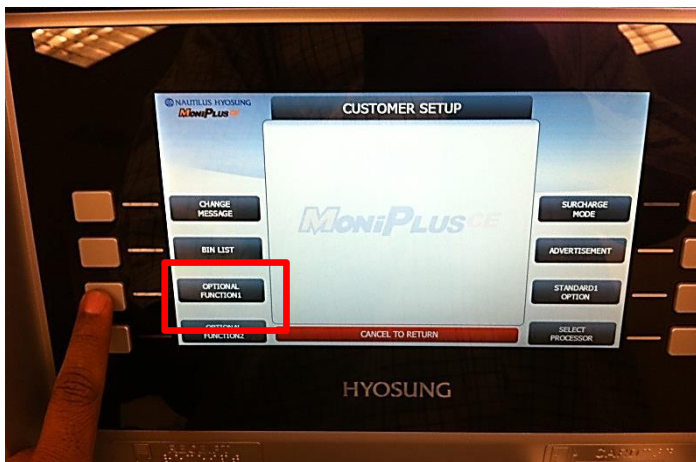


# To enable the EMV card reader to do Chip Card transactions (this must be supported by your host processor)

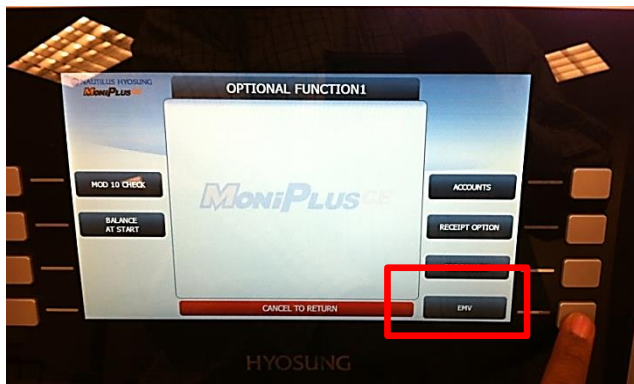
1. Select **Customer Setup**.



2. Select **Optional Function 1**.



3. Select **EMV** and **Enable** to begin processing EMV transactions.



Note: Once EMV is enabled, all cards (magnetic stripe and EMV “chip” cards) will be held in the card reader at the start of the transaction. Non-EMV card (mag stripe) users will be asked if they want to proceed with the transaction and to remove their card so the magnetic stripe can be read. EMV card users will be prompted to remove their cards prior to receiving cash.